

PROPERTY REPORTS

from Severn Trent Searches

Q2 2023

- ❑ House prices - annual change percent (by region) - May 2023 data
- ❑ House prices - annual % change 2 year comparison (Severn Trent region) - May 2023 data
- ❑ Sales trend - sales comparison (by county) - Q2 2023 data
- ❑ Mortgage lenders - market share - 2022 data



www.severntrentsearches.com



0115 971 3550

SEVERN TRENT
SEARCHES

a part of

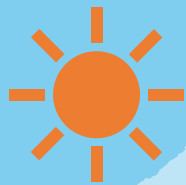


House Prices

annual change % - May 2023



House price increases generally follow a South West to North East trend



UK hotspots

Annual increase

City of London, Greater London \uparrow 29.5%

Windsor & Maidenhead, South East \uparrow 12.7%

Hartlepool, North East \uparrow 11.7%



Turbulent areas

Annual decrease

City of Westminster, Greater London \downarrow 18.3%

Bournemouth, Christchurch & Poole, South West \downarrow 10.86%

Greenwich, Greater London \downarrow 10.7%

North East

\uparrow 6.5%

Yorkshire and the Humber

\uparrow 2.8%

West Midlands

\uparrow 2.8%

East Midlands

\uparrow 2.4%

South East

\uparrow 2.2%

North West

\uparrow 1.9%

East of England

\uparrow 1.5%

South West

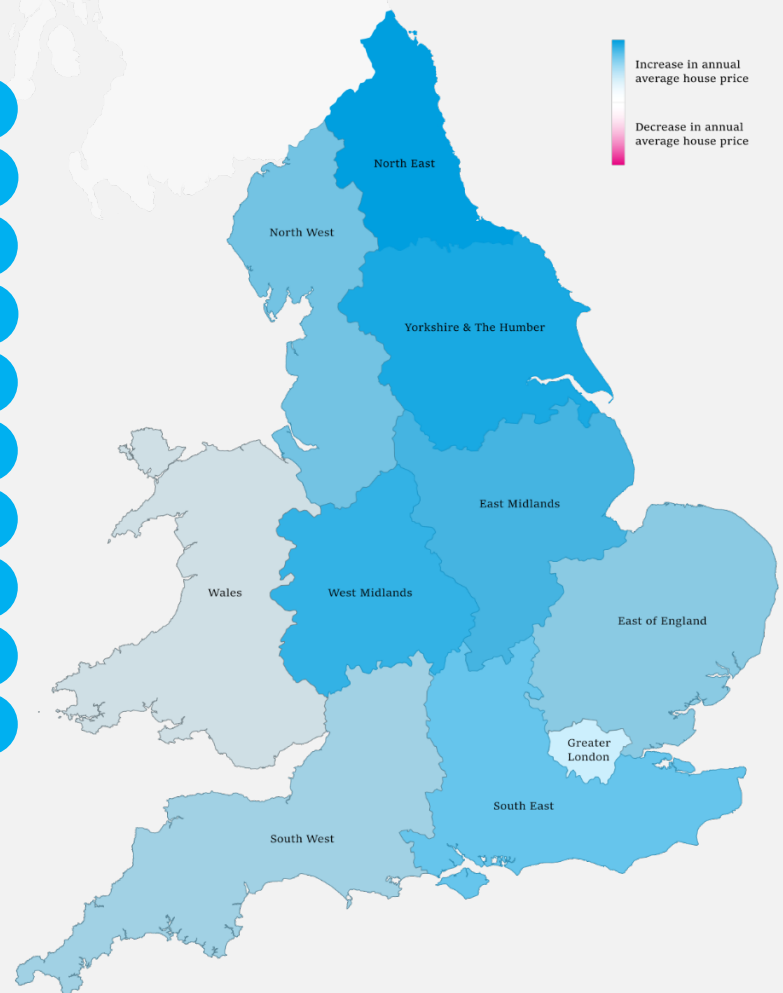
\uparrow 1.2%

Greater London

\uparrow 0.8%

Wales

\uparrow 0.6%



Data source: www.acadata.co.uk

Figures based upon comparing seasonal annual figures i.e.

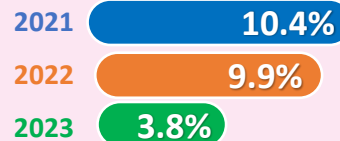
May 2023 against May 2022 data

House Prices

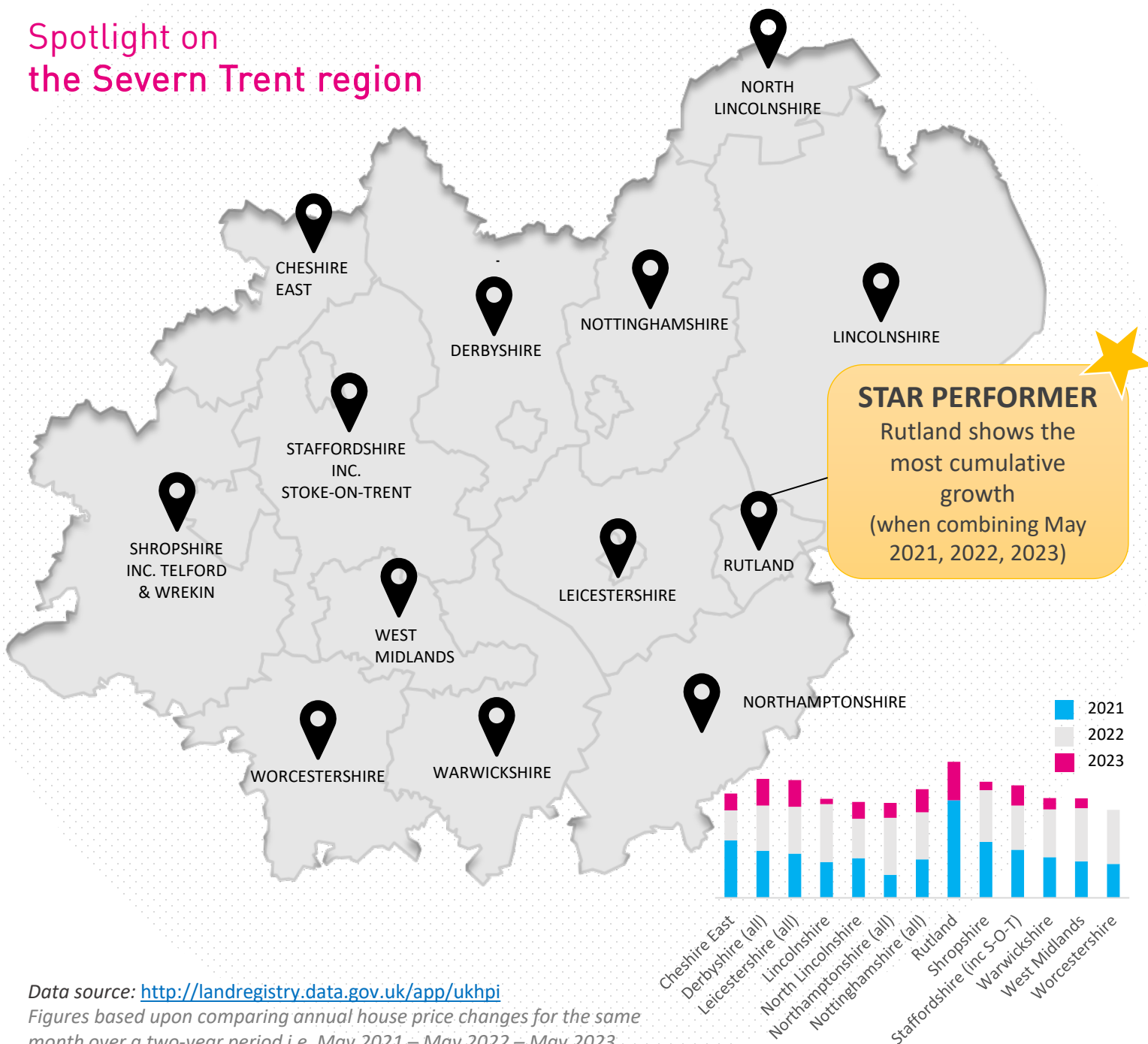
Annual change % – Two-year comparison

May 2021 May 2022 May 2023

House prices in the Severn Trent region (STR) continue to grow strongly in 2023



Spotlight on the Severn Trent region

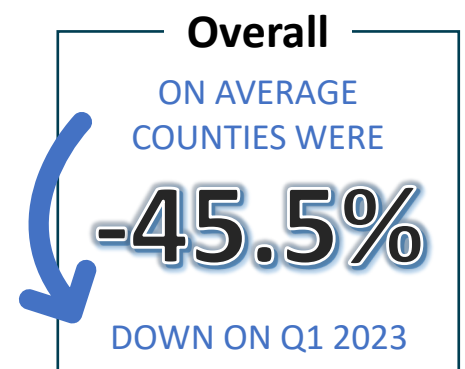
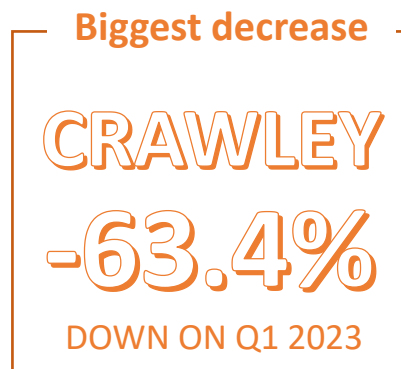


Data source: <http://landregistry.data.gov.uk/app/ukhpi>
 Figures based upon comparing annual house price changes for the same month over a two-year period i.e. May 2021 – May 2022 – May 2023

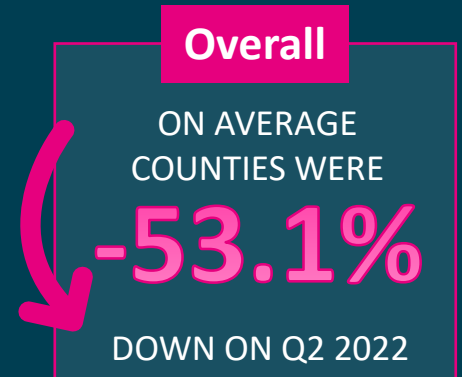
Sales Trend

Q2 2023 sales comparison by County

Q2 2023 comparison
to last quarter (Q1 2023)













Q2 2023 comparison
to last year (Q2 2022)



Mortgage Lenders

Market Share - 2022

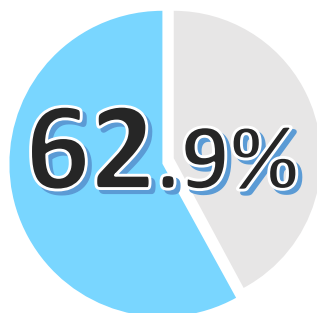
THE TOP FIVE

		Market Share 2022	Difference to 2021 market share
1		16.8%	 1.3%
2		13.2%	 1.5%
3		12.1%	 0.6%
4		11.4%	 0.6%
5		9.5%	 1.2%

£52.7bn

the amount loaned out by the Lloyds Banking Group in 2022

DOWN £3.2BN on 2021



A MAJORITY SHARE

of all mortgage lending in the UK goes through the TOP FIVE providers

Data source: www.ukfinance.org.uk

Figures based upon comparing annual lending figures for mortgage providers between 2021 & 2022

A little bit about Severn Trent Searches

We're one of the biggest and long-established search providers in the region. Established in 2000, we're the official providers of the CON29DW within the Severn Trent region.

As well as drainage and water searches, we also provide:



Local Authority
searches



Mining & Subsidence
searches



Environmental
searches



Chancel and title
searches



Flood searches



Utility searches



www.severntrentsearches.com



0115 971 3550

SEVERN TRENT
SEARCHES
a part of 